




***HIGH-TECH***  
High Ceramic Technology

Porcelain Tiles For Contemporary Architecture



**HIGH-TECH**  
High Ceramic Technology

porcelain tiles for  
contemporary architecture

 Descubre High-Tech Discover High-Tech







**HIGH-TECH**  
High Ceramic Technology

La superficie visible de la cerámica High-Tech se conforma con elementos minerales de gran valor decorativo, obtenidos aplicando tecnologías innovadoras. Estos minerales se eligen en base a colores, apariencia, brillo y son preparados de una forma específica para cada modelo. Como pequeños microcosmos de materia, cada una de estas partículas se mezcla al igual que sucede en la naturaleza, por lo que a pequeña escala todas las piezas son diferentes, aunque tienen una apariencia similar. Controlando la proporcionalidad de esta mezcla y compactándola, se consigue una homogeneidad del mineral que servirá para continuar dotándolo de los efectos o diseños deseados. Estos efectos o diseños decorativos pueden ser veteados, fósiles, sombreados, degradados, brillos o mates y se aplican sobre la base mineral ya conformada, gracias a tecnologías de última generación. El proceso de cocción fusiona todo el mineral dotándolo de una gran compactación y apariencia muy natural.

The visible surface of our High-Tech ceramic tiles is made of minerals with a high decorative potential, obtained using innovative technologies. These minerals are chosen for their colours, appearance and shine, and they are prepared in a specific way for each model. In a reflection of what occurs in the natural world, these tiny isolated particles all combine in such a way that, when the tiles are viewed close up, they are all slightly different, despite their general similarity. By controlling the proportions of the mix and compacting it, a uniform mineral background is achieved that can then be lent certain effects or patterns. These effects or decorative patterns can take the form of veins, fossil remains, shading, shade variation, and gloss or matt effects. These are applied to the mineral background using cutting-edge technologies.

During the firing process, the whole mineral top layer fuses to create a hard surface conspicuous for its eye-catching natural beauty.



#conceptgrislined22x90cm  
#conceptgris22x90/14,3x90cm

mineral effects





hard surface



natural appearance



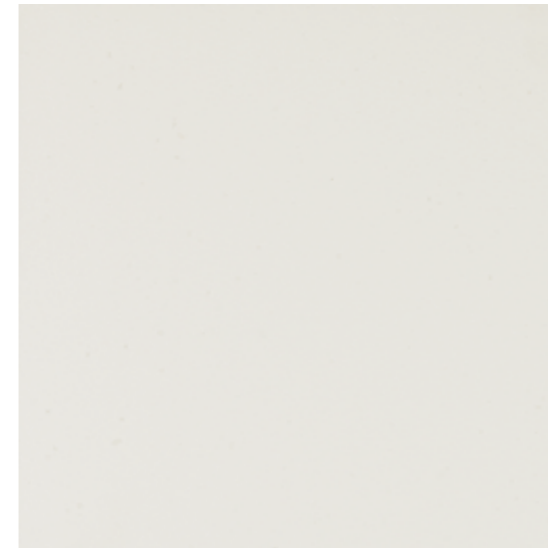
#technicdark59,6x59,6cm



HIGH-TECH series  
arkconcepttechnic

ark 59,6x59,6 cm

Gres Porcelánico Rectificado / Color Masa Rectified Porcelain Tiles / Coloured Biscuit



ARK WHITE

V5590707 - 100179269 - G369  
59.6x59.6 cm (x10.5 mm) 23 1/2"x23 1/2"

PIEZA ESPECIAL SPECIAL PIECE

HUELLA TÉCNICA ARK WHITE V7710069 - 100180282 - G133

31.6x59.6 cm 12 1/2"x23 1/2"

ZÓCALO ARK WHITE V4830082 - 100180274 - G42

9x59.6 cm (x10.5 mm) 3 1/2"x23 1/2"

COLOCACIÓN TILE-LAYING

adhesivo recomendado recommended adhesive

butech - one-flex n blanco B12903004 - 100004234

junta recomendada recommended joint

butech - colorstuk rapid n blanco B22501001 - 100004294

ARK WHITE BRIGHT

V5590718 - 100179287 - G369  
59.6x59.6 cm (x10.5 mm) 23 1/2"x23 1/2"

PIEZA ESPECIAL SPECIAL PIECE

HUELLA TÉCNICA ARK WHITE BRIGHT V7710068 - 100180254 - G133

31.6x59.6 cm 12 1/2"x23 1/2"

ZÓCALO ARK WHITE BRIGHT V4830081 - 100180248 - G42

9x59.6 cm (x10.5 mm) 3 1/2"x23 1/2"

COLOCACIÓN TILE-LAYING

adhesivo recomendado recommended adhesive

butech - one-flex n blanco B12903004 - 100004234

junta recomendada recommended joint

butech - colorstuk rapid n blanco B22501001 - 100004294

**HIGH-TECH**  
High Ceramic Technology



RECTIFICADO  
RECTIFIED



SUAVE  
SOFT



DESTONIFICACION  
TONE VARIATION



EXTERIORES  
EXTERIORS

**HIGH-TECH**  
High Ceramic Technology



RECTIFICADO  
RECTIFIED



ABRILLANTADO  
BRIGHT



DESTONIFICACION  
TONE VARIATION



EXTERIORES  
EXTERIORS

# concept 59,6x59,6 cm

Gres Porcelánico Rectificado / Color Masa Rectified Porcelain Tiles / Coloured Biscuit



## CONCEPT GRIS

V5590708 - 100179225 - G369

59.6x59.6 cm (x10.5 mm) 23 1/2"x23 1/2"

### PIEZA ESPECIAL SPECIAL PIECE

HUELLA TÉCNICA CONCEPT GRIS V7570065 - 100180276 - G148

31.6x90 cm 12 1/2"x35 3/8"

ZÓCALO CONCEPT GRIS V4830084 - 100180249 - G42

9x59.6 cm (x10.5 mm) 3 1/2"x23 1/2"

### COLOCACIÓN TILE-LAYING

adhesivo recomendado recommended adhesive

butech - one-flex n blanco B12903004 - 100004234

junta recomendada recommended joint

butech - colorstuk rapid n gris B22502013 - 100004305



## CONCEPT GRIS BRIGHT

V5590715 - 100179226 - G369

59.6x59.6 cm (x10.5 mm) 23 1/2"x23 1/2"

### PIEZA ESPECIAL SPECIAL PIECE

HUELLA TÉCNICA CONCEPT GRIS BRIGHT V7710072 - 100181014 - G133

31.6x59.6 cm 12 1/2"x23 1/2"

ZÓCALO CONCEPT GRIS BRIGHT V4830087 - 100180264 - G42

9x59.6 cm (x10.5 mm) 3 1/2"x23 1/2"

### COLOCACIÓN TILE-LAYING

adhesivo recomendado recommended adhesive

butech - one-flex n blanco B12903004 - 100004234

junta recomendada recommended joint

butech - colorstuk rapid n gris B22502013 - 100004305



## CONCEPT NATURAL

V5590710 - 100179228 - G369

59.6x59.6 cm (x10.5 mm) 23 1/2"x23 1/2"

### PIEZA ESPECIAL SPECIAL PIECE

HUELLA TÉCNICA CONCEPT NATURAL V7570064 - 100180283 - G148

31.6x90 cm 12 1/2"x35 3/8"

ZÓCALO CONCEPT NATURAL V4830085 - 100180280 - G42

9x59.6 cm (x10.5 mm) 3 1/2"x23 1/2"

### COLOCACIÓN TILE-LAYING

adhesivo recomendado recommended adhesive

butech - one-flex n blanco B12903004 - 100004234

junta recomendada recommended joint

butech - colorstuk rapid n gris B22502013 - 100004305



## CONCEPT NATURAL BRIGHT

V5590713 - 100179244 - G369

59.6x59.6 cm (x10.5 mm) 23 1/2"x23 1/2"

### PIEZA ESPECIAL SPECIAL PIECE

HUELLA TÉCNICA CONCEPT NATURAL BRIGHT V7710073 - 100181032 - G133

31.6x59.6 cm 12 1/2"x23 1/2"

ZÓCALO CONCEPT NATURAL BRIGHT V4830083 - 100180253 - G42

9x59.6 cm (x10.5 mm) 3 1/2"x23 1/2"

### COLOCACIÓN TILE-LAYING

adhesivo recomendado recommended adhesive

butech - one-flex n blanco B12903004 - 100004234

junta recomendada recommended joint

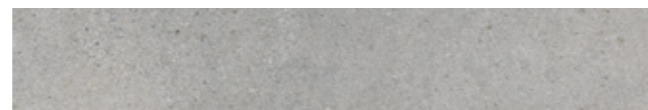
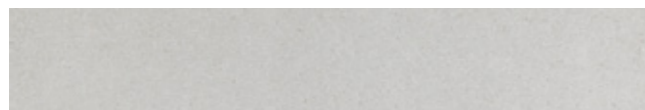
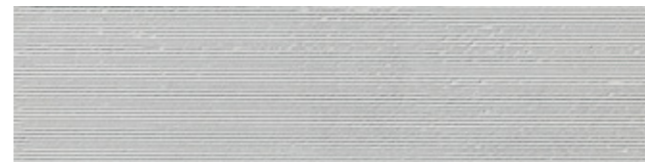
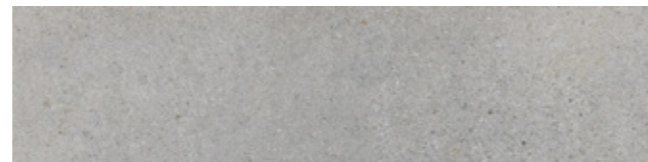
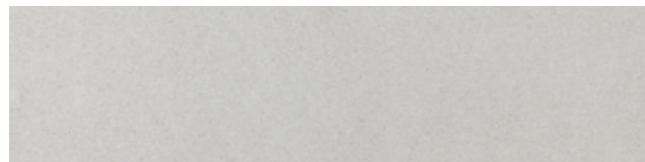
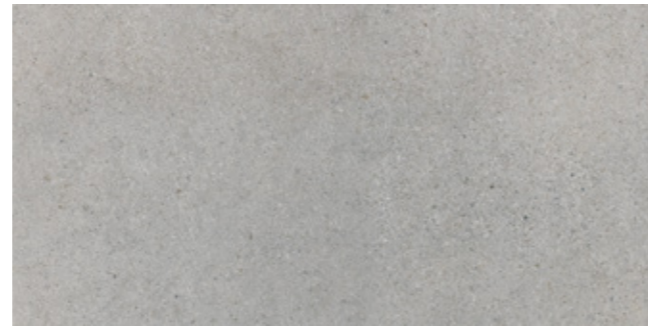
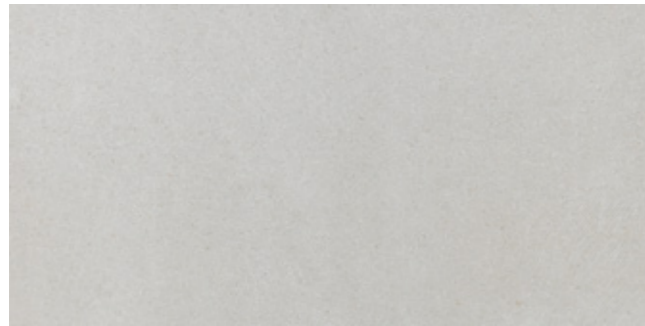
butech - colorstuk rapid n gris B22502013 - 100004305





# concept 45x90/22x90/14,3x90 cm

Gres Porcelánico Rectificado / Color Masa Rectified Porcelain Tiles / Coloured Biscuit



## CONCEPT GRIS

V5550022 - 100179235 - G378  
45x90 cm (x10.5 mm) 17 3/4"x35 3/8"

V5050042 - 100179289 - G391  
22x90 cm (x10.5 mm) 8 5/8"x35 3/8"

V2950062 - 100179288 - G391  
14.3x90 cm (x10.5 mm) 5 5/8"x35 3/8"

### COLOCACIÓN TILE-LAYING

adhesivo recomendado recommended adhesive  
butech - one-flex n blanco B12903004 - 100004234  
junta recomendada recommended joint  
butech - colorstuk rapid n gris B22502013 - 100004305



## CONCEPT NATURAL

V5550021 - 100179242 - G378  
45x90 cm (x10.5 mm) 17 3/4"x35 3/8"

V5050040 - 100179106 - G391  
22x90 cm (x10.5 mm) 8 5/8"x35 3/8"

V2950061 - 100179105 - G391  
14.3x90 cm (x10.5 mm) 5 5/8"x35 3/8"

### COLOCACIÓN TILE-LAYING

adhesivo recomendado recommended adhesive  
butech - one-flex n blanco B12903004 - 100004234  
junta recomendada recommended joint  
butech - colorstuk rapid n gris B22502013 - 100004305



## CONCEPT GRIS LINED

V5550027 - 100179227 - G378  
45x90 cm (x10.5 mm) 17 3/4"x35 3/8"

V5050047 - 100179140 - G391  
22x90 cm (x10.5 mm) 8 5/8"x35 3/8"

V2950069 - 100179300 - G391  
14.3x90 cm (x10.5 mm) 5 5/8"x35 3/8"

### COLOCACIÓN TILE-LAYING

adhesivo recomendado recommended adhesive  
butech - one-flex n blanco B12903004 - 100004234  
junta recomendada recommended joint  
butech - colorstuk rapid n gris B22502013 - 100004305



## CONCEPT NATURAL LINED

V5550028 - 100179229 - G378  
45x90 cm (x10.5 mm) 17 3/4"x35 3/8"

V5050049 - 100179127 - G391  
22x90 cm (x10.5 mm) 8 5/8"x35 3/8"

V2950068 - 100179142 - G391  
14.3x90 cm (x10.5 mm) 5 5/8"x35 3/8"

### COLOCACIÓN TILE-LAYING

adhesivo recomendado recommended adhesive  
butech - one-flex n blanco B12903004 - 100004234  
junta recomendada recommended joint  
butech - colorstuk rapid n gris B22502013 - 100004305





# technic 59,6x59,6 cm

Gres Porcelánico Rectificado / Color Masa Rectified Porcelain Tiles / Coloured Biscuit



## TECHNIC DARK

V5590711 - 100179246 - G369

59.6x59.6 cm (x10.5 mm) 23 1/2"x23 1/2"

## PIEZA ESPECIAL SPECIAL PIECE

HUELLA TÉCNICA TECHNIC DARK V7570066 - 100180284 - G148

31.6x90 cm 12 1/2"x35 3/8"

ZÓCALO TECHNIC DARK V4830086 - 100180262 - G42

9x59.6 cm (x10.5 mm) 3 1/2"x23 1/2"

## COLOCACIÓN TILE-LAYING

adhesivo recomendado recommended adhesive

butech - one-flex n blanco B12903004 - 100004234

junta recomendada recommended joint

butech - colorstuk rapid n antracita B22502005 - 100004298



## TECHNIC DARK NATURE

V5590714 - 100179237 - G369

59.6x59.6 cm (x10.5 mm) 23 1/2"x23 1/2"

## PIEZA ESPECIAL SPECIAL PIECE

HUELLA TÉCNICA TECHNIC DARK NATURE V7570067 - 100180277 - G148

31.6x90 cm 12 1/2"x35 3/8"

ZÓCALO TECHNIC DARK NATURE V4460049 - 100180936 - G42

9x59.6 cm (x10.5 mm) 3 1/2"x23 1/2"

## COLOCACIÓN TILE-LAYING

adhesivo recomendado recommended adhesive

butech - one-flex n blanco B12903004 - 100004234

junta recomendada recommended joint

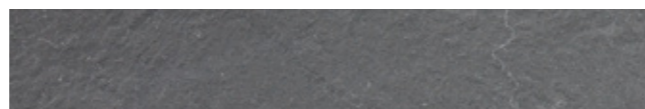
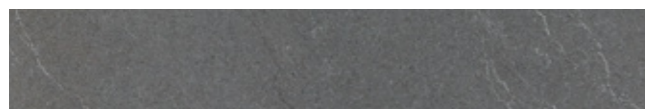
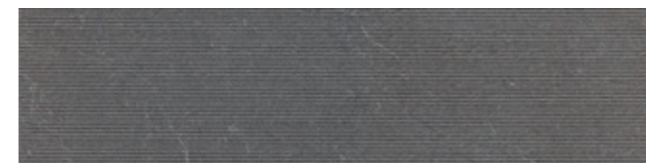
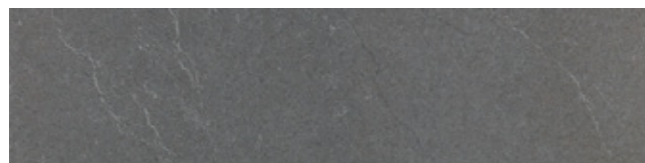
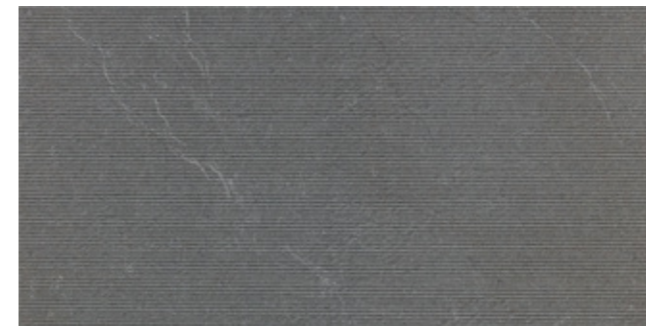
butech - colorstuk rapid n antracita B22502005 - 100004298





# technic 45x90/22x90/14,3x90 cm

Gres Porcelánico Rectificado / Color Masa Rectified Porcelain Tiles / Coloured Biscuit



## TECHNIC DARK

V5550024 - 100179251 - G378  
45x90 cm (x10.5 mm) 17 3/4"x35 3/8"

V5050039 - 100179143 - G391  
22x90 cm (x10.5 mm) 8 5/8"x35 3/8"

V2950060 - 100179128 - G391  
14.3x90 cm (x10.5 mm) 5 5/8"x35 3/8"

### COLOCACIÓN TILE-LAYING

adhesivo recomendado recommended adhesive  
butech - one-flex n blanco B12903004 - 100004234  
junta recomendada recommended joint  
butech - colorstuk rapid n antracita B22502005 - 100004298

**HIGH-TECH**  
High Ceramic Technology



## TECHNIC DARK NATURE

V5550033 - 100179252 - G378  
45x90 cm (x10.5 mm) 17 3/4"x35 3/8"

V5050048 - 100179144 - G391  
22x90 cm (x10.5 mm) 8 5/8"x35 3/8"

V2950065 - 100179107 - G391  
14.3x90 cm (x10.5 mm) 5 5/8"x35 3/8"

### COLOCACIÓN TILE-LAYING

adhesivo recomendado recommended adhesive  
butech - one-flex n blanco B12903004 - 100004234  
junta recomendada recommended joint  
butech - colorstuk rapid n antracita B22502005 - 100004298

**HIGH-TECH**  
High Ceramic Technology



## TECHNIC DARK LINED

V5550032 - 100179236 - G378  
45x90 cm (x10.5 mm) 17 3/4"x35 3/8"

V5050044 - 100179129 - G391  
22x90 cm (x10.5 mm) 8 5/8"x35 3/8"

V2950066 - 100179132 - G391  
14.3x90 cm (x10.5 mm) 5 5/8"x35 3/8"

### COLOCACIÓN TILE-LAYING

adhesivo recomendado recommended adhesive  
butech - one-flex n blanco B12903004 - 100004234  
junta recomendada recommended joint  
butech - colorstuk rapid n antracita B22502005 - 100004298

**HIGH-TECH**  
High Ceramic Technology







HIGH-TECH series  
technical characteristics

#technicdarklined14,3x90cm  
#technicdarknature14,3x90cm





# VENIS®

## HIGH-TECH 2016

Fecha edición Edition date:

1ª Edición / Junio / 2016

1<sup>st</sup> Edition / June / 2016

Diseño Design:

Dpto. Publicidad VENIS

Fotografía Photography:

Dpto. Publicidad VENIS

Imprime Printed by:

-

Edita Edition :

VENIS, S.A. (Porcelanosa grupo)

Carretera Nacional 340 Km 56.5

Aptdo/Box 190 - 12540

Villarreal - Castellón - SPAIN

Teléfono Phone:

+34 964 507 700\*

Fax: 964 507 719 Nacional

+34 964 507 729 International

www.porcelanosagrup.com

e-mail:venis@venis.com

© 2016 Porcelanosa Grupo.

El contenido de este catálogo está protegido por la Ley de Propiedad Intelectual, Real Decreto Legislativo 1/1996.

Cualquier reproducción del mismo, en parte o en su totalidad, sin autorización expresa del Grupo Porcelanosa puede ser sancionada conforme el Código Penal.

VENIS S.A. se reserva el derecho de modificar y/o suprimir ciertos modelos expuestos en este catálogo sin previo aviso.

Los colores de las piezas pueden presentar ligeras diferencias respecto a los originales.

Los ambientes que se muestran en este catálogo son sugerencias decorativas de carácter publicitario, debiéndose utilizar en la instalación real las instrucciones de colocación editadas por VENIS.

La descripción de los modelos del catálogo está acompañada por información técnica adicional. Para interpretar esta información técnica consultar la GUÍA TÉCNICA, documento anexo del CATÁLOGO GENERAL de VENIS 2016.

© 2016 Porcelanosa Grupo.

The contents of this catalogue are protected by virtue of the Spanish Intellectual Property Act, Royal Legislative Decree 1/1996.

The partial or total reproduction of this catalogue, without the express authorisation of PORCELANOSA is punishable under the Spanish Criminal Code.

VENIS S.A. reserves the right to modify and/or discontinue certain models displayed in this catalogue.

The colours of pieces displayed herein may differ slightly from originals.

The settings shown in this catalogue are design proposals for advertising purposes.

In real situations in which the tiles are laid, the installations instructions published by VENIS should be followed.

Accompanying the description of the models in the catalogue is additional technical information. To interpret this technical data, see the TECHNICAL GUIDE, attached as an appendix to the VENIS 2016 GENERAL CATALOGUE.



BY APPOINTMENT TO  
H.R.H. THE PRINCE OF WALES  
MANUFACTURER AND DISTRIBUTOR  
OF CERAMIC TILES AND BUILDING PRODUCTS.  
PORCELANOSA GROUP LIMITED

PORCELANOSA Grupo



ES05/1829



ES07/4453



WE SUPPORT



VENIS<sup>®</sup>  
PORCELANOSA Grupo