



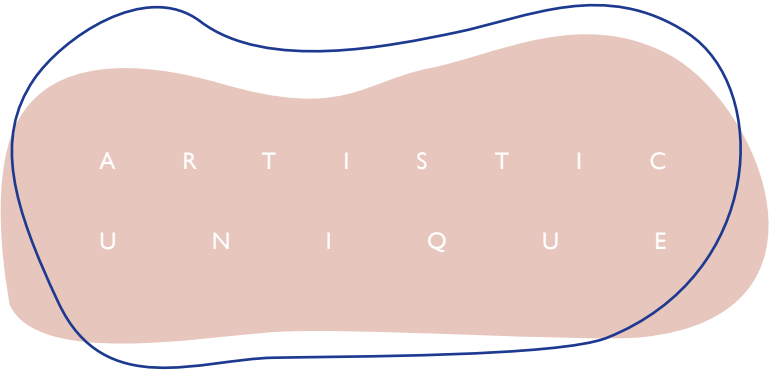
Finish Studio

NEW SKINS FOR THE BATHROOM



noken
PORCELANOSA BATHROOMS

Finish Studio is a meticulously selected AESTHETIC that Noken applies to its products as if they were a blank slate.



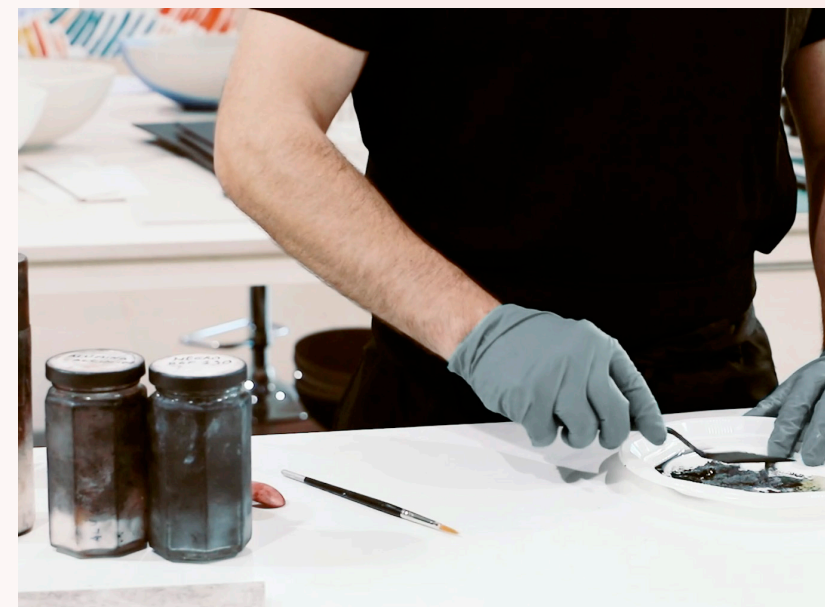
With an artistic approach and traditional charm, baths, washbasins and shower trays take on new skins, mimicking other surfaces. The perfect combination of innovation, meticulously selected materials, and a production process in which we pander to every detail, results in natural coloured, beautifully tactile ceramic pieces with unbeatable resistance.

BASINS

Using a highly complex manual process, the Finish Studio service can be applied to washbasins from the rounded Slender range, maintaining its characteristic thin edge.

Hand-painted ceramic washbasins are unique pieces that rely on the extensive technical knowledge and sensitivity of the artisan working on them: pieces are customised at both a visual and tactile level. A unique, exclusive result.

Finish Studio



Slender





Hand-painted
Unique pieces



Deep concrete



Caliza concrete



Dark concrete



Marquina stone

Slender

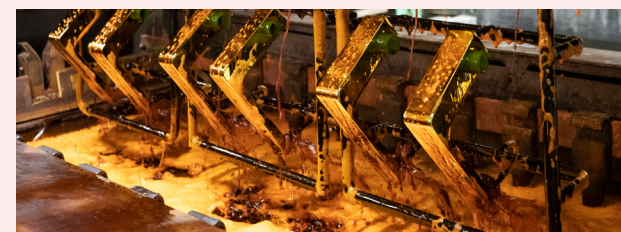
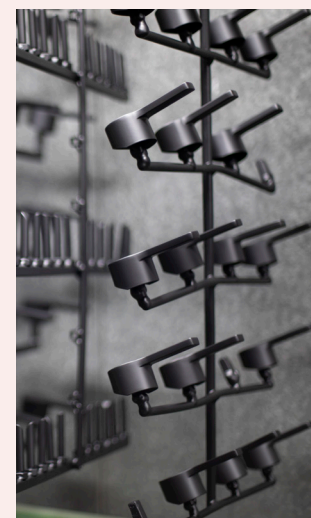
The PVD gloss versions of copper and gold elevate the Slender washbasins, giving your bathroom the total look.



MIX & MATCH

Noken Brassware adds Premium finishes to this on-trend colour. Taps, showers and accessories are available in matt black and gloss white, as well as stainless metals, gold, titanium, brushed titanium, copper and brushed copper finishes.

Finish Studio

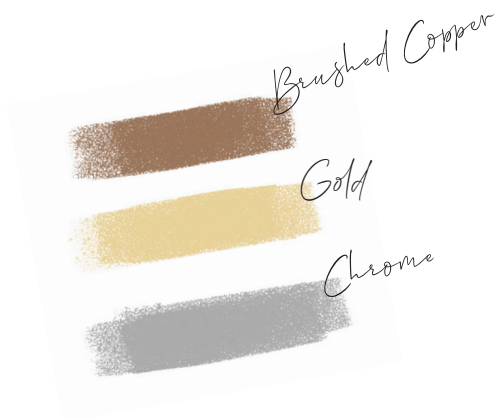


LIGNAGE

DESIGNED BY *Xavier Esteve*

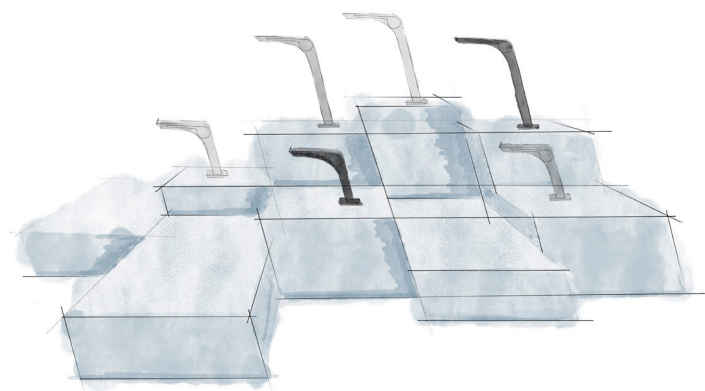
A journey through time

A new bathroom concept is born. Lignage is a journey through time, the design legacy of Noken Porcelanosa Bathrooms. Our latest designer jewel. Sketch by sketch, its shapes and lines are revealed, defining its exclusivity and becoming a luxury piece for the bathroom. It has been awarded the iFDesign Award 2019 and the Delta Selection in the ADI Awards 2020.



OXO

A modern and exclusive design



Oxo, a modern and exclusive design which works as a unique sculptural piece for the bathroom, thanks to the avant-garde lines. The Oxo series of taps has been recognised by If Design Awards 2020 and Green Good Design Awards 2020, in the 'Green Product Design' category for its ability to "design a better world" with Noken Eco-Start.

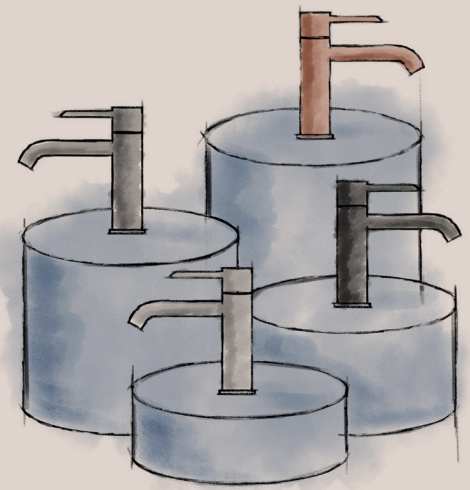


Round

Integral bathroom design



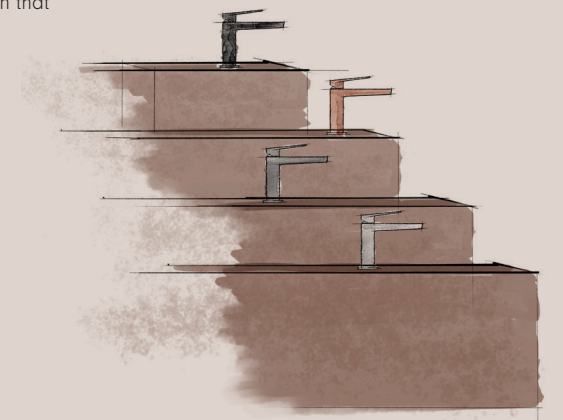
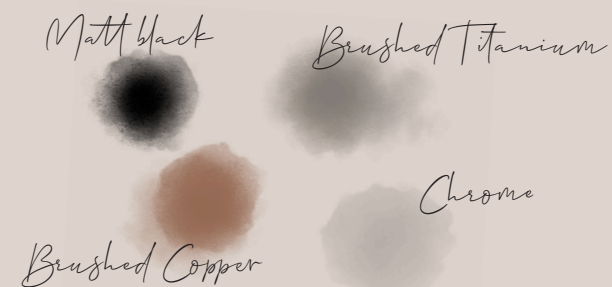
Copper and titanium finishes in their brushed version, join the Round and Square collections under the premises of practicality and refinement, offering a integral bathroom design to the user.



square



Both collections are also a WaterForest design. A commitment that saves up to 89% of water by limiting consumption to a maximum of 5l / min. They also have the Noken Eco-Start cold opening system that activates the hot water flow only when the user needs it. A solution that reduces energy consumption.

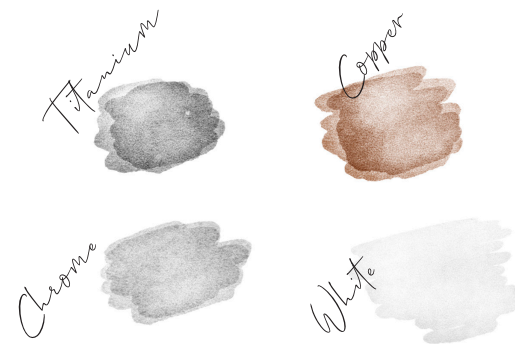
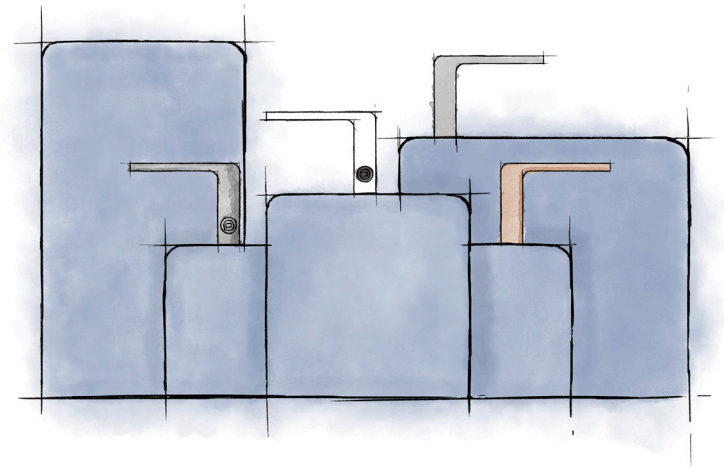


LOUNGE

simone micheli & noken

Avant-garde finishes

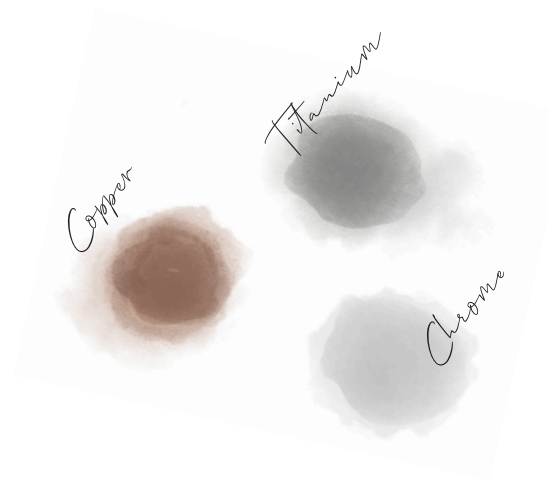
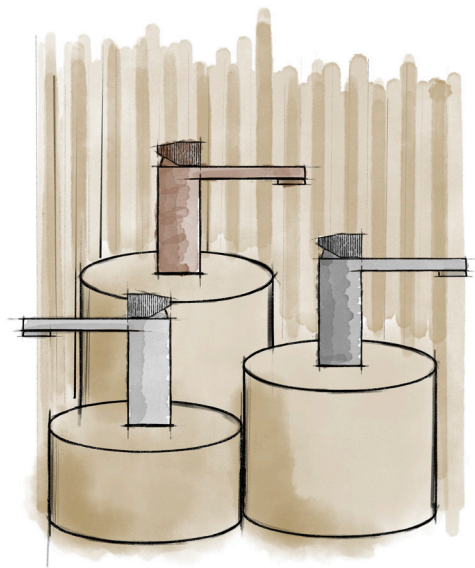
A reinterpretation of the bathroom design by Simone Micheli. A timeless set in straight and winding designs. Avant-garde finishes combined with quality materials which allow the creation of a unique bathroom with chrome, white, copper and titanium finishes.



TONO

Foster + Partners

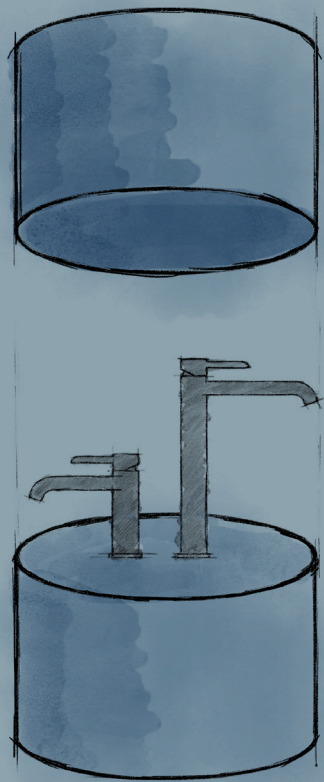
Sophisticated minimalism with the Finish Studio finishes for Tono taps, by Foster + Partners. The designer brings a universe of simplicity and elegance to Tono collection with titanium, chrome and copper finishes.



Sophisticated minimalism

RoundINOX

Durability and stability



For even more durability and stability. Round is available in this new material, with AISI 316 certification. Even more reliable for indoor or outdoor use, in an on-trend brushed finish.

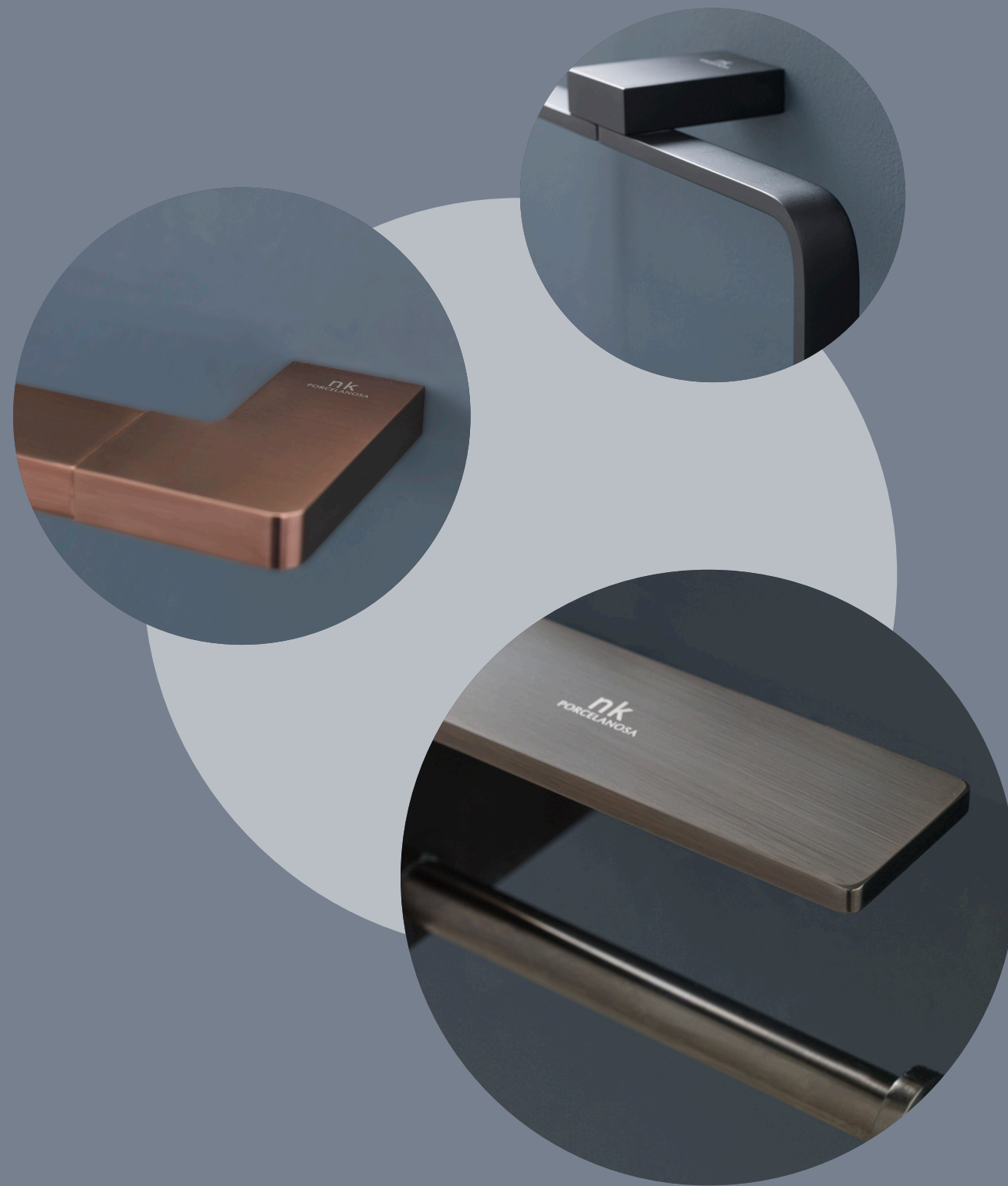
Brushed stainless steel



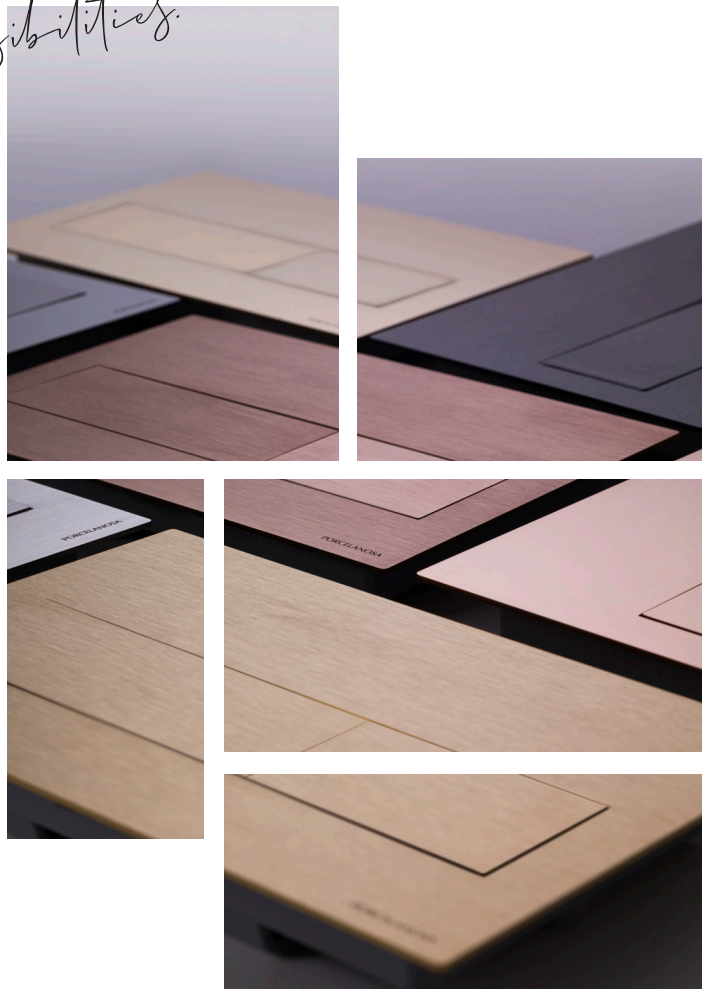
Finish Studio expands your aesthetic options in the bathroom, with taps, shower heads and accessories.



Lounge and Urban-c collections for bathroom accessories are perfectly complemented with our taps in Finish Studio finishes.



Metallic glints that give pieces even more exclusivity and broaden decorative possibilities.



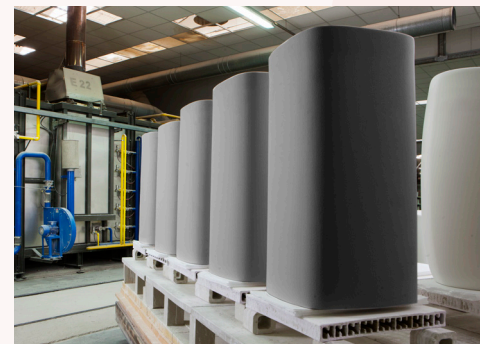
Tono flush plates collection combine perfectly with our special Finish Studio finishes. Creating a Total Look in the bathroom.



SOLIDS

Some of our pieces can be dyed in solid colours, offering a wealth of possibilities.

Finish Studio



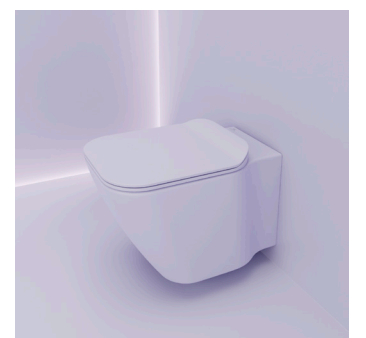
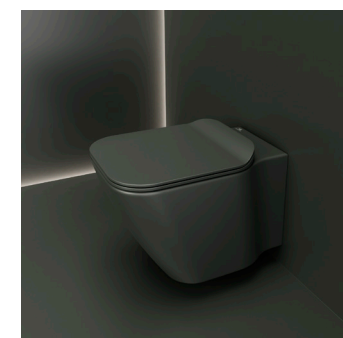
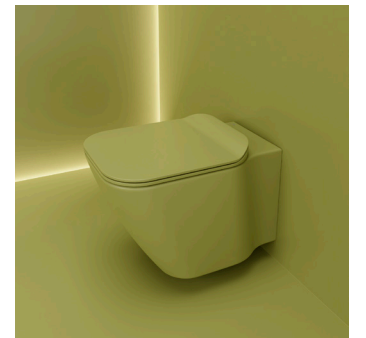
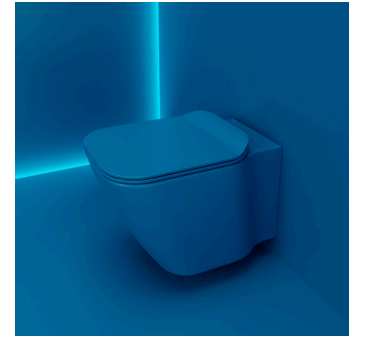
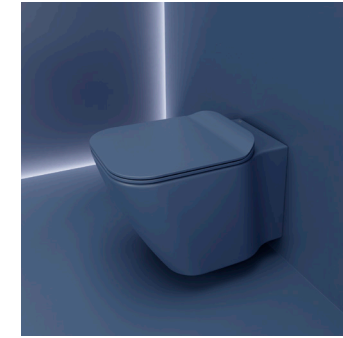
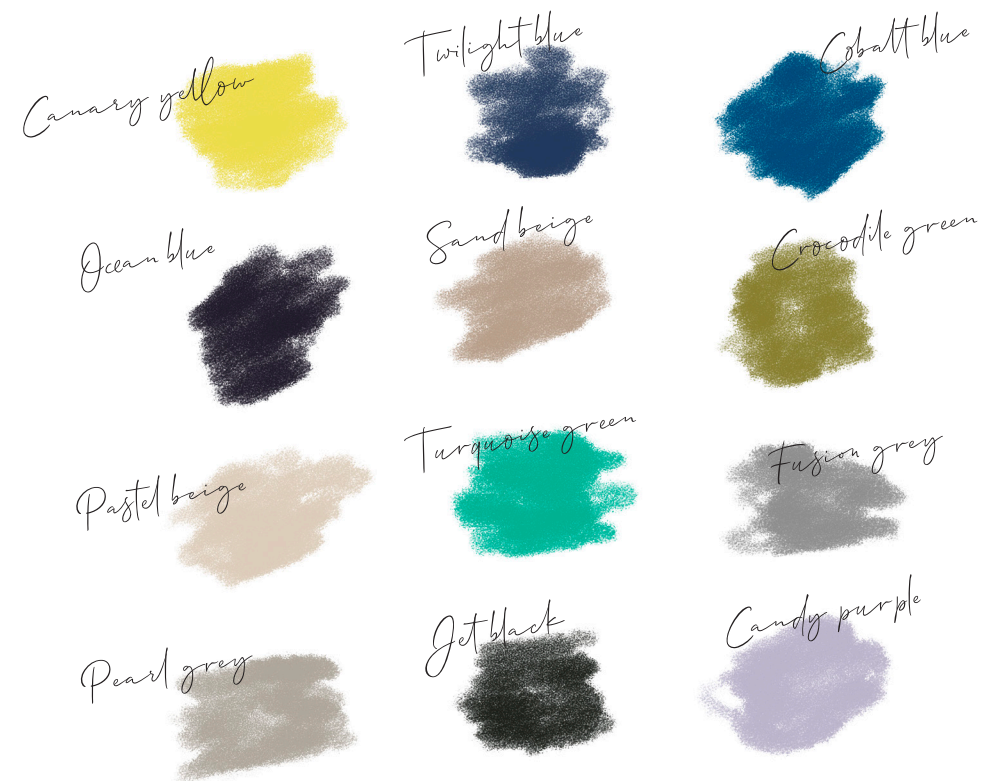
Solid colors for the bathroom



On the grey spectrum we have toilets, bidets and washbasins in grey, black and matt white from our collections including Lounge, Essence C, Acro compact and Arquitect.

ESSENCE-C COMPACT

Selected pieces from our sanitaryware collections can be dyed in solid colours offering a wealth of possibilities.



COLOR PALLETE

Finish Studio can apply any colour from the RAL chart to free-standing baths, as well as matt metallic copper, titanium and gold colours. The colour is applied to the bath panel by hand using artisanal production processes. The interior is left white, and we can customise it with metallic accessories that marry perfectly with the finishes of the taps and accessories.

Finish Studio



*Applied by hand using
artisanal production processes*





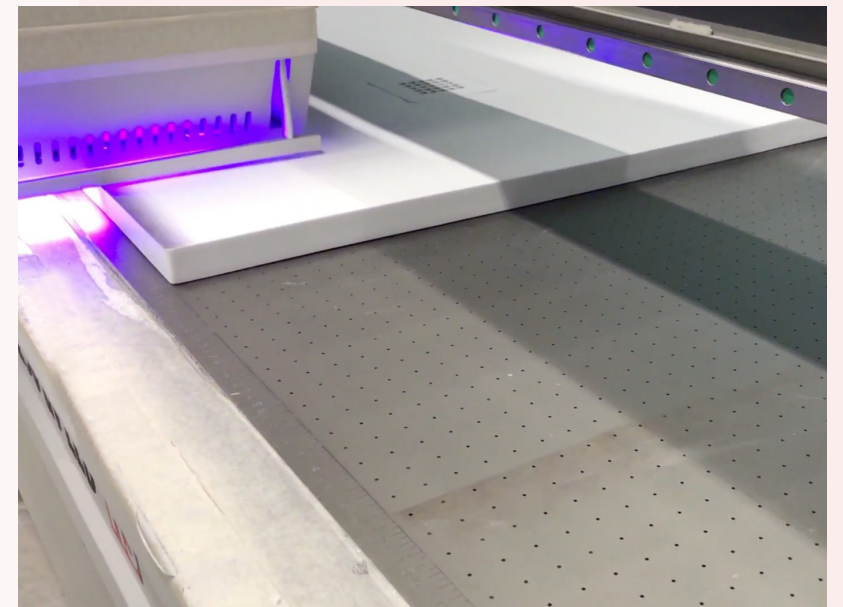
*Solid colors
available from RAL chart*



SLATE

Our Slate range of shower trays is produced using digital printing techniques with state-of-the-art UV-LED ink, with a selection of options that echo natural finishes.

Finish Studio





CARRARA MARBLE

TRAVERTINO MARBLE



DEEP CONCRETE

CALIZA CONCRETE

DARK CONCRETE



SCANDINAVIAN WOOD

ARCE WOOD

COGNAC WOOD



MARQUINA STONE

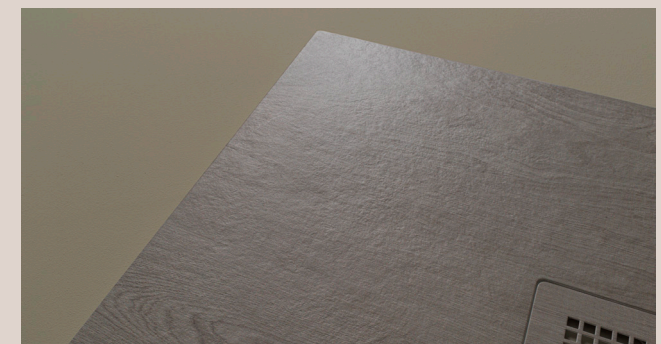
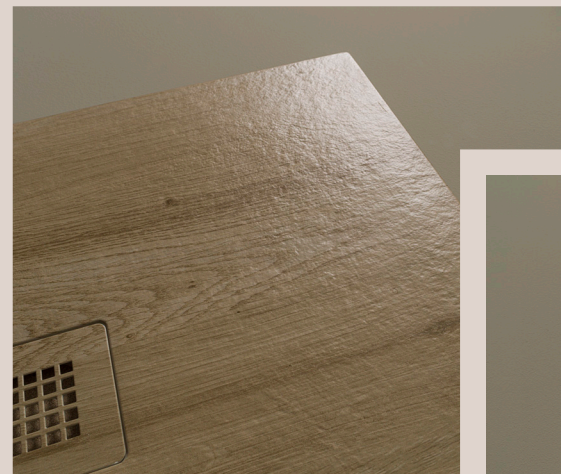
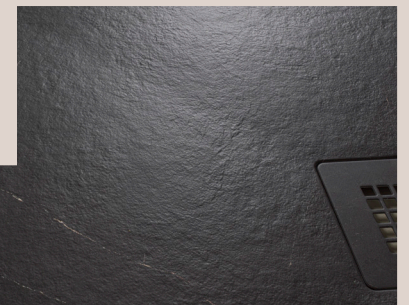
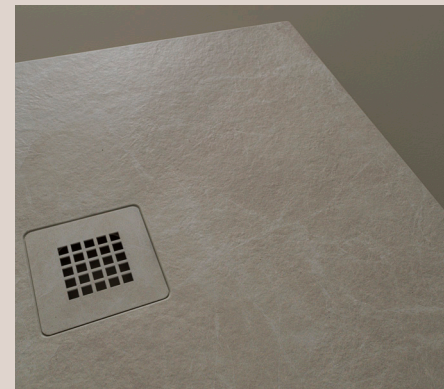
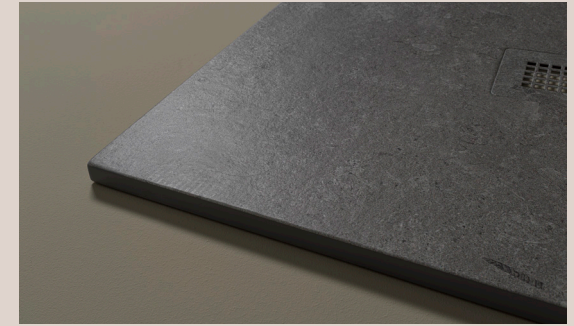
MARFIL STONE

Can be applied to standard sizes or
customised products as required

These looks are enhanced by the texture of the Slate series, and can be applied to standard sizes or customised products as required by the customer.

Stone such as Deep Concrete, Dark Concrete, Caliza Concrete, Marquina Stone, Marfil Stone, Carrara Marble and Travertino Marble; and wood such as Scandinavian Wood, Cognac Wood and Arce Wood.

As well as being ultra-flat and light, the shower tray is composed of eco-friendly materials, with 60% recycled white marble, 30% eco-resin and 10% thermolite.



noken

PORCELANOSA BATHROOMS

NOKEN DESIGN, S.A.U. CV-20 km. 2
12540 - Vila-real - Castellón - Spain

Tel: +34 964 50 64 50
e-mail: noken@noken.com
www.noken.com

Graphic Design _ Marketing department by Noken

Art Direction _ Marketing department by Noken

Photography _ Marketing department by Noken

Publisher _ Noken Design, S.A.U.

December _ 2020



NOKEN DESIGN, S.A.U. The contents of this catalogue are protected by virtue of the Spanish Intellectual Property Act, Royal Legislative Decree 1/1996. The partial or total reproduction of this catalogue, without the express authorisation of NOKEN DESIGN, S.A.U. is punishable under the Spanish Criminal Code. Reserves the right to cancel and/or change models or accessories without prior notice or replacement. The settings shown in this catalogue are design proposals for adversiting purposes. In real situations in wich the tiles are laid, we recommend to use as a guide for the installation, the technical specifications available on the Noken GENERAL RATE.

